

gender stereotypes - media literacy

Name _____ Class Period _____

Practice your media literacy skills by analyzing how men and women are portrayed in songs. Use your laptop to follow the instructions below. Record your thoughts and answers on this worksheet.

◆ GENDER STEREOTYPES BRAINSTORM

CREATE A LIST OF STEREOTYPES THAT OUR SOCIETY HOLDS ABOUT HOW PEOPLE SHOULD ACT BASED ON THEIR GENDER. WHAT DOES IT MEAN WHEN SOMEONE SAYS TO...

"Act Like a Man":

1. Don't cry _____
2. Good at sports _____
3. _____
4. _____
5. _____
6. _____
7. _____
8. _____
9. _____

"Act Like a Lady":

1. Don't get angry _____
2. Good at cleaning _____
3. _____
4. _____
5. _____
6. _____
7. _____
8. _____
9. _____

Stereotype:

A widely held but oversimplified image or idea of a particular type of person or thing.

Stereotypes are over-generalized; one assumes that the stereotype is true for each individual person in the category.

Acknowledging that a stereotype exists does **not** mean that you believe it's true! The first step to challenge stereotypes of all types is to recognize that they exist in our society.

NOW WE'RE GOING TO LOOK AT SONG LYRICS TO SEE IF GENDER STEREOTYPES ARE BEING REINFORCED OR CHALLENGED. SELECT A SONG OF YOUR CHOICE TO ANALYZE, THEN GOOGLE THE LYRICS.

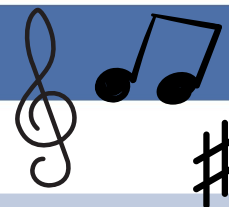
1 SONG NAME & ARTIST : _____

What is the song about?

How are men portrayed in the song? How are women portrayed in the song?

Who sings the song? What is their gender identity? Would the song have a different meaning if it was sung by someone of a different gender?

Does the song reinforce gender stereotypes, or challenge them? Explain your thoughts.



SELECT A SECOND SONG, THEN GO TO GOOGLE TO FIND THE LYRICS.

2 SONG NAME & ARTIST : _____

What is the song about?

How are men portrayed in the song? How are women portrayed in the song?

Who sings the song? What is their gender identity? Would the song have a different meaning if it was sung by someone of a different gender?

Does the song reinforce gender stereotypes, or challenge them? Explain your thoughts.

REFLECTION QUESTIONS

Where do we learn what it means to "be a man" or "be a lady"?

How are those messages reinforced or supported?

Think of a time that you have felt limited by gender stereotypes. How did it feel?

How do gender stereotypes impact friendships? Romantic relationships? Sexual relationships?

What can someone do to challenge traditional gender stereotypes?